

# Magellan Core ESG Fund

(MANAGED FUND) (TICKER: MCSE)

A diversified global equities portfolio of 70-90 high quality global equities with ESG risk integration

**PORTFOLIO MANAGER**

**ELISA DI MARCO**

**ARSN 645 514 110**

**APIR MGE8722AU**

**AS AT 31 JULY 2024**

**INVESTMENT PHILOSOPHY**

To invest in outstanding companies utilising Magellan's long standing investment process to identify quality companies within a framework that considers Environmental, Social and Governance risks and our proprietary low carbon framework.

**OBJECTIVES**

The Fund's primary investment objective is to achieve attractive risk-adjusted returns over the medium to long term through investment in a diversified portfolio of high-quality companies. This objective incorporates the consideration of ESG factors and the application of our low carbon framework.

**PORTFOLIO CONSTRUCTION**

An actively managed, research driven and competitively priced portfolio of 70-90 of the world's highest quality and ESG active businesses. The Fund leverages Magellan's DNA, that is Magellan's proprietary definition of quality, ESG framework, investment process and investment team.  
Typical cash and cash equivalent exposure between 0-5%.

**INVESTMENT RISKS**

All investments carry risk. While it is not possible to identify every risk relevant to an investment in the Fund, we have provided details of risks in the Product Disclosure Statement. You can view the PDS for the Fund on Magellan's website [www.magellangroup.com.au](http://www.magellangroup.com.au).

**ENVIRONMENTAL, SOCIAL, GOVERNANCE AND LOW CARBON FRAMEWORK**

Integrated proprietary ESG risk assessment process and low carbon framework. Companies with material exposures to activities which in our view have wide ranging detrimental impacts on society are removed from the investable universe (refer to page 3 of this document for further information). We overlay our proprietary low carbon framework to deliver a portfolio which aims to limit the carbon intensity of

the portfolio to one-third of the weighted average carbon intensity of the MSCI World Index, as reported by MSCI. Companies are reviewed and scored for the materiality of their exposure to environmental, social and governance (ESG) factors. The assessment is a direct input into portfolio management.

**WHY QUALITY?**

We aim to invest in companies that have sustained competitive advantages, which permits the company to generate returns on capital in excess of its cost of capital for a sustained period of time ("quality"). Companies with these attributes may reduce the risk of permanent capital loss. Active fundamental research and continuous monitoring are key to our determination of whether or not a company is 'quality'. We consider quality companies are more likely to withstand market cycles, and compound returns for investors.

**MAGELLAN CORE ESG FUND: KEY PORTFOLIO**

TICKER	FUND SIZE	NAV PER UNIT	BUY/SELL SPREAD <sup>1</sup>	MANAGEMENT FEES <sup>2</sup>
MCSE	AUD \$17.9 million	\$4.6452 per unit	0.10% / 0.10%	0.51% p.a.

**PERFORMANCE<sup>3</sup>**

	1 MONTH (%)	3 MONTHS (%)	6 MONTHS (%)	1 YEAR (%)	INCEPTION DATE 11 DECEMBER 2020 3 YEARS (% p.a.)	Since Inception (% p.a.)
Magellan Core ESG Fund	3.0	5.8	7.1	15.8	7.4	12.0
MSCI World NTR Index	4.1	7.9	13.8	22.1	11.1	14.8
Excess	-1.1	-2.1	-6.7	-6.3	-3.7	-2.8

CALENDAR YEAR RETURNS	CYTD (%)	2023 (%)	2022 (%)	2021 (%)	2020 (part year)
Magellan Core ESG Fund	12.8	23.2	-15.5	28.1	0.4
MSCI World NTR Index	18.8	23.0	-12.2	29.3	-0.3
Excess	-6.0	0.2	-3.3	-1.2	0.7

**TOP 10 HOLDINGS**

Company	Sector <sup>4</sup>
Alphabet Inc	Consumer Platforms
Amazon.com Inc	E-Commerce
Home Depot Inc	Food & Staples Retailing
Mastercard Inc	Payments
Microsoft Corporation	Software
Netflix Inc	Consumer Platforms
Novartis AG	Health Care
SAP SE	Software
UnitedHealth Group Inc	Health Care
Visa Inc	Payments

**PERFORMANCE CHART GROWTH OF AUD \$10,000<sup>3</sup>**



<sup>1</sup> Only applicable to investors who apply for units directly with the Responsible Entity.

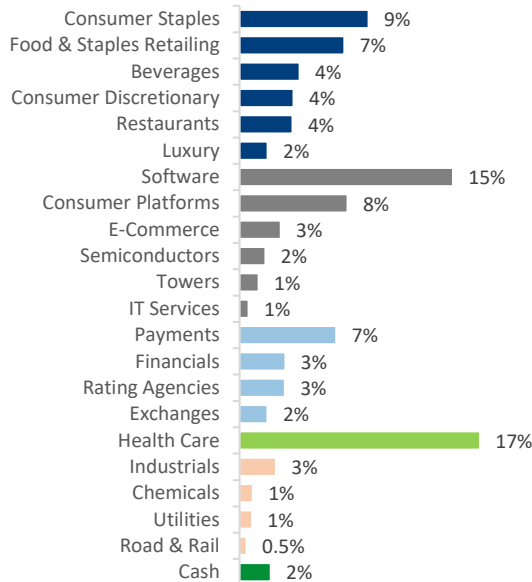
<sup>2</sup> Transaction costs may also apply – refer to the Product Disclosure Statement. All fees are inclusive of the net effect of GST.

<sup>3</sup> Calculations are based on exit price with distributions reinvested, after ongoing fees and expenses but excluding individual tax, member fees and entry fees (if applicable). Returns denoted in AUD.

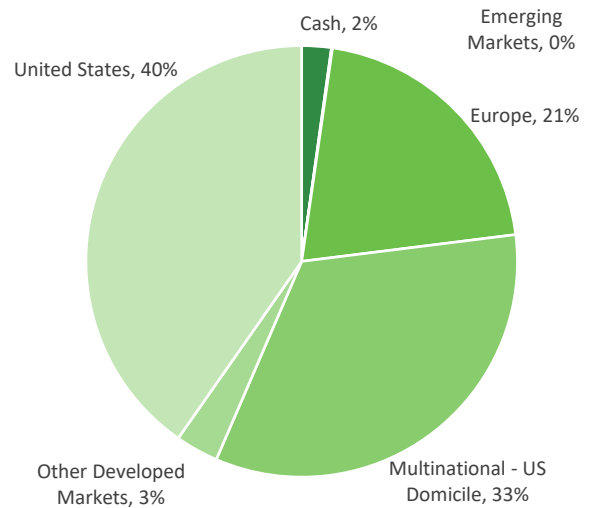
<sup>4</sup> Sectors are internally defined.

\* MSCI World Net Total Return Index (AUD). All MSCI data is the property of MSCI. No use or distribution without written consent. Data provided "as is" without any warranties. MSCI and its affiliates assume no liability for or in connection with the data. Please see complete disclaimer in [www.magellangroup.com.au/funds/benchmark-information/](http://www.magellangroup.com.au/funds/benchmark-information/).

## PORTFOLIO SNAPSHOT<sup>5</sup>



## GEOGRAPHIC COMPOSITION<sup>5</sup>

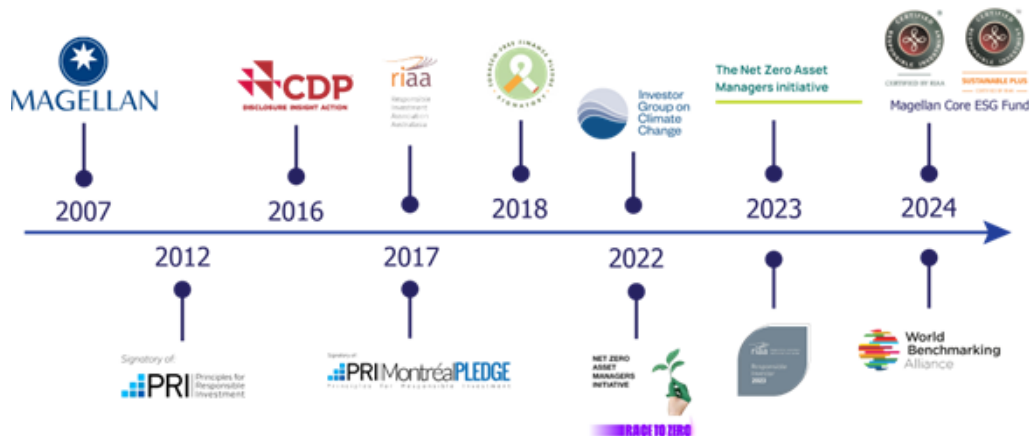


## ESG AT MAGELLAN

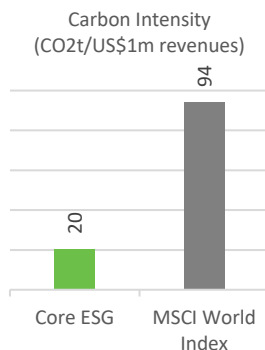
A key part of our investment process is to consider material risks and opportunities facing companies and industries including Environmental, Social and Governance (ESG) issues. Our team diligently engages with companies on ESG risks and opportunities, with the aim of strengthening our conviction in portfolio risk management and improving investment outcomes.

## SIGNATORIES

Since inception Magellan has been focused on identifying quality companies and achieving investment objectives. Please see the “Responsible Investing” page on our website for more details on our commitments and our UNPRI scores. Magellan is proudly a member of Responsible Investment Association Australasia (RIAA) and received a Responsible Investor designation in 2023. The Magellan Core ESG Fund has been certified by the RIAA according to the operational and disclosure practices required under the Responsible Investor Certification Program. See [www.responsiblereturns.com.au](http://www.responsiblereturns.com.au) for details<sup>6</sup>.



## CARBON RISK METRICS\*



Carbon risk metrics: As at 30 June 2024 the Carbon Intensity of the Fund was 20, being below the weighted average carbon intensity of the MSCI World Index at 94.

Our low carbon framework aims to limit the carbon intensity of the portfolio to one-third of the weighted average carbon intensity of the MSCI World Index, as reported by MSCI. Please see the PDS for further detail.

<sup>5</sup> Sectors are internally defined. Geographical exposure is calculated on a look through basis based on underlying revenue exposure of individual companies held within the portfolio. Exposures may not sum to 100% due to rounding.

<sup>6</sup> The Responsible Investment Certification Program does not constitute financial product advice. Neither the Certification Symbol nor RIAA recommends to any person that any financial product is a suitable investment or that returns are guaranteed. Appropriate professional advice should be sought prior to making an investment decision. RIAA does not hold an Australian Financial Services Licence.

\* Carbon intensity data available on a quarterly basis. Source: MSCI. Reproduced by permission. The Fund’s carbon intensity score is calculated using MSCI data. In a limited number of circumstances, where data is not available or Magellan deems it appropriate, manual adjustments are made to the MSCI carbon intensity score for certain investments held by the Fund.

## EXCLUSIONS AND TOLERANCE GUIDANCE

The Fund excludes companies with business involvement at or above the specified tolerance guidance in the industries, which in our view may have wide-ranging detrimental impacts on society.

Industry	Tolerance Guidance (% of total revenue)^
<b>Adult entertainment</b> Companies which produce or distribute pornography	5% aggregate limit for the production or distribution of pornography
<b>Alcohol</b> Companies which produce or distribute alcohol	5% for the production of alcohol 10% for the distribution of alcohol
<b>Cannabis</b> Companies which produce or distribute cannabis	5% aggregate limit for the production or distribution of cannabis
<b>Gambling</b> Companies involved in the direct operation or ownership of gambling facilities	5% aggregate limit for the direct operation or ownership of gambling facilities
<b>Tobacco</b> Companies which produce tobacco or distribute tobacco products (including e-cigarettes)	0% for the production of tobacco 5% for the distribution of tobacco
<b>Controversial Weapons</b> Companies which manufacture controversial armaments and weapons (including nuclear weapons)	0% for the manufacturing of controversial armaments and weapons
<b>Conventional Weapons</b> Companies which manufacture conventional weapons and civilian firearms Companies which distribute civilian firearms Companies which provide equipment, systems or services in direct support of conventional weapons or that provide systems with direct weapons-related applications	5% for the manufacturing of conventional weapons and civilian firearms 5% for the distribution of civilian firearms 5% for direct revenue from the distribution of equipment, systems or services in direct support of conventional weapons or from the distribution of systems with direct weapons-related applications
<b>Fossil fuels</b> Companies with direct revenue from the mining or extraction of fossil fuels (thermal coal, gas and oil) Companies with direct revenue from energy generation based on fossil fuels (thermal coal, gas and oil)	0% for the mining or extraction of fossil fuels (thermal coal, gas and oil) 5% for energy generation based on fossil fuels (thermal coal, gas and oil)

^Business involvement in the listed industries is determined by reference to the percentage of total revenue of the company using data provided by a third-party provider. Revenue from a business activity is assessed by the third-party provider by reference to the gross revenue from the activity where reported by the company. Where gross revenue is not reported, revenue is assessed by reference to the net revenue from the activity where reported by the company. Where no revenue from the activity is reported, the third-party provider estimates either net or gross revenue from the activity depending on publicly available information. The type of revenue used to determine business involvement in the listed industries is not specified, since reporting practices generally vary by industry and by company, and a company's reporting practices may change over time.

## A SELECTION OF QUALITY PORTFOLIO HOLDINGS



The company logos above represent a selection of securities held by the Fund (in no specific order) as at 31 July 2024.

## IMPORTANT INFORMATION

Units in the Fund referred to herein are issued by Magellan Asset Management Limited ABN 31 120 593 946, AFS Licence No. 304 301 ('Magellan'). This material is issued by Magellan and has been prepared for general information purposes only and must not be construed as investment advice or as an investment recommendation. This material does not take into account your investment objectives, financial situation or particular needs. This material does not constitute an offer or inducement to engage in an investment activity nor does it form part of any offer documentation, offer or invitation to purchase, sell or subscribe for interests in any type of investment product or service. You should obtain and consider the relevant Product Disclosure Statement ('PDS') and Target Market Determination ('TMD') and consider obtaining professional investment advice tailored to your specific circumstances before making a decision about whether to acquire, or continue to hold, the relevant financial product. A copy of the relevant PDS and TMD relating to the relevant Magellan financial product may be obtained by calling +61 2 9235 4888 or by visiting [www.magellangroup.com.au](http://www.magellangroup.com.au).

Past performance is not necessarily indicative of future results and no person guarantees the future performance of the Fund, the amount or timing of any return from it, that asset allocations will be met, that it will be able to implement its investment strategy or that its investment objectives will be achieved. Statements contained in this material that are not historical facts are based on current expectations, estimates, projections, opinions and beliefs of Magellan or the third party responsible for making those statements (as relevant). Such statements involve known and unknown risks, uncertainties and other factors, and undue reliance should not be placed thereon. This material may contain 'forward-looking statements'. Actual events or results or the actual performance of a Magellan financial product or service may differ materially from those reflected or contemplated in such forward-looking statements. This material may include data, research and other information from third-party sources. Magellan makes no guarantee that such information is accurate, complete or timely and does not provide any warranties regarding results obtained from its use. No representation or warranty is made with respect to the accuracy or completeness of any of the information contained in this material. Magellan will not be responsible or liable for any losses arising from your use or reliance upon any part of the information contained in this material.

Certain information contained herein (the "Information") is sourced from/copyright of MSCI Inc., MSCI ESG Research LLC, or their affiliates ("MSCI"), or information providers (together the "MSCI Parties") and may have been used to calculate scores, signals, or other indicators. The Information is for internal use only and may not be reproduced or disseminated in whole or part without prior written permission. The Information may not be used for, nor does it constitute, an offer to buy or sell, or a promotion or recommendation of, any security, financial instrument or product, trading strategy, or index, nor should it be taken as an indication or guarantee of any future performance. Some funds may be based on or linked to MSCI indexes, and MSCI may be compensated based on the fund's assets under management or other measures. MSCI has established an information barrier between index research and certain Information. None of the Information in and of itself can be used to determine which securities to buy or sell or when to buy or sell them. The Information is provided "as is" and the user assumes the entire risk of any use it may make or permit to be made of the Information. No MSCI Party warrants or guarantees the originality, accuracy and/or completeness of the Information and each expressly disclaims all express or implied warranties. No MSCI Party shall have any liability for any errors or omissions in connection with any Information herein, or any liability for any direct, indirect, special, punitive, consequential or any other damages (including lost profits) even if notified of the possibility of such damages.

Further information regarding any benchmark referred to herein can be found at [www.magellangroup.com.au/benchmark-information](http://www.magellangroup.com.au/benchmark-information). Any third-party trademarks contained herein are used for information purposes only and are the property of their respective owners. Magellan claims no ownership in, nor any affiliation with, such trademarks. This material and the information contained within it may not be reproduced, or disclosed, in whole or in part, without the prior written consent of Magellan.